

BALLENISLES POD 6A

BEING A REPLAT OF A PARCEL OF LAND LYING WITHIN A PORTION OF THE PLAT "BOUNDARY OF GOLF CLUB SITE OF THE PROFESSIONAL GOLFERS' ASSOCIATION OF AMERICA" AS RECORDED IN PLAT BOOK 27, PAGES 182 AND 183, PUBLIC RECORDS OF PALM BEACH COUNTY, FLORIDA AND A PORTION OF SECTIONS 11 & 12, TOWNSHIP 42 SOUTH, RANGE 42 EAST, CITY OF PALM BEACH GARDENS, PALM BEACH COUNTY, FLORIDA.

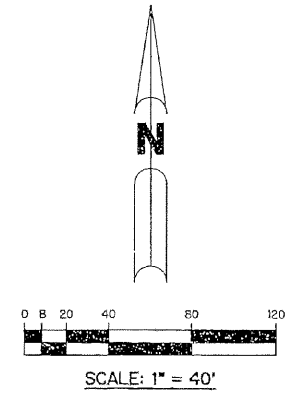
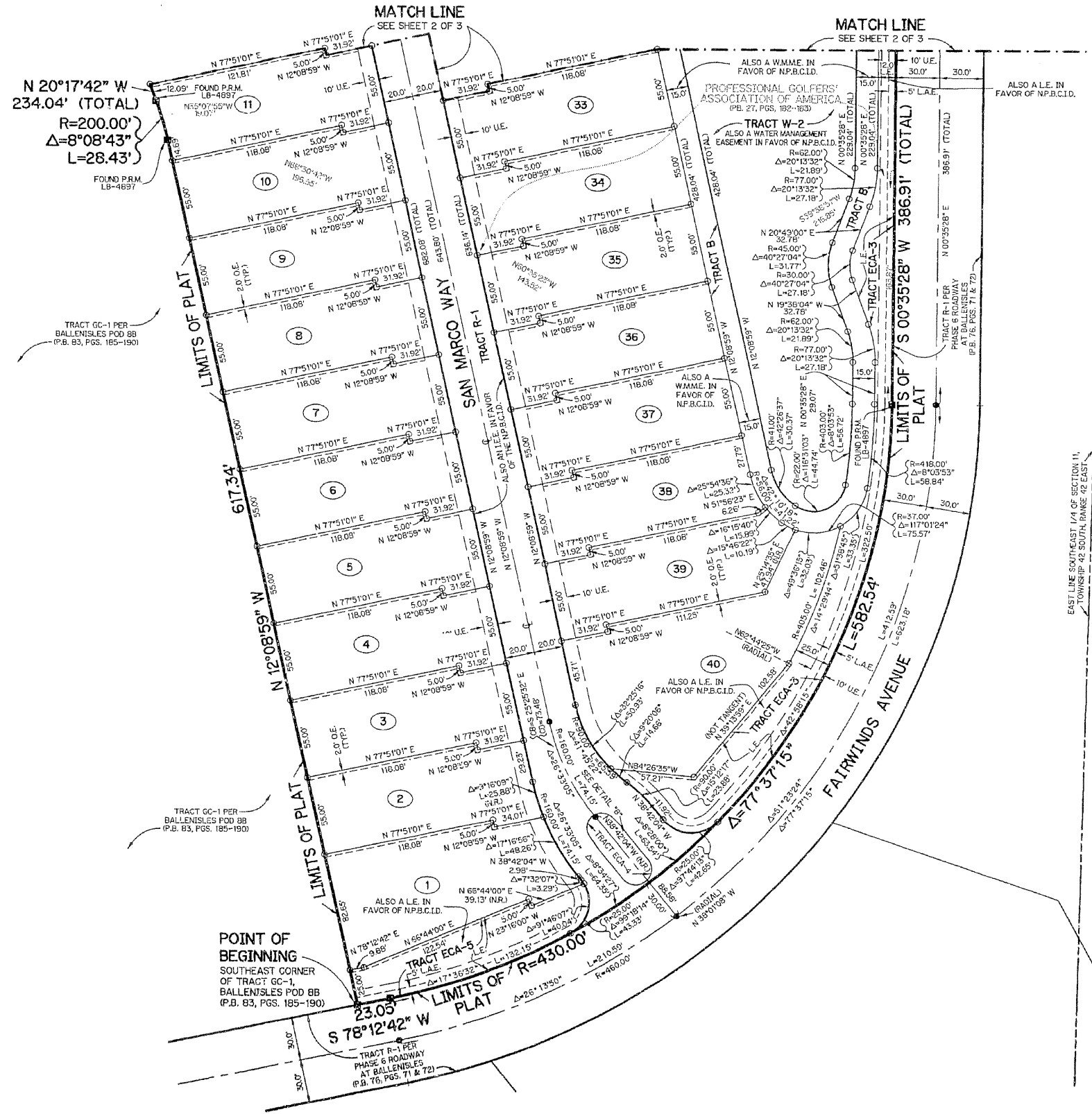
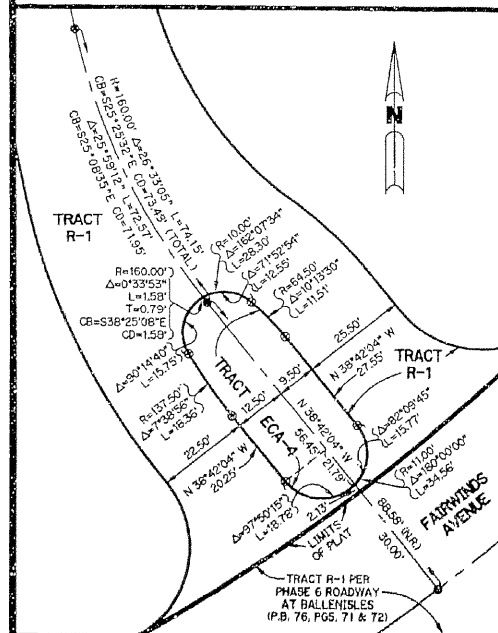
SHEET 3 OF 3 FEBRUARY, 1999

LEGEND:

- - SET PERMANENT REFERENCE MONUMENT, LB - 6674
- - FOUND PERMANENT REFERENCE MONUMENT
- - SET PERMANENT CONTROL POINT, LB - 6674
- Δ - DELTA ANGLE
- C.B. - CHORD BEARING
- C.D. - CHORD DISTANCE
- C. - CENTERLINE
- D.E. - DRAINAGE EASEMENT
- ECA-# - EXCLUSIVE COMMON AREA TRACT WITH NUMBER
- GC-# - GOLF COURSE TRACT WITH NUMBER
- I.E.E. - IMPRESS - EGRESS EASEMENT
- L - ARC LENGTH
- L.A.E. - LIMITED ACCESS EASEMENT
- N.P.B.C.I.D. - NORTHERN PALM BEACH COUNTY IMPROVEMENT DISTRICT
- N.R. - NOT RADIAL
- N.T.S. - NOT TO SCALE
- O.R.B. - OFFICIAL RECORD BOOK
- P.B. - PLAT BOOK
- P.S. - PAGES
- P.L.S. - PROFESSIONAL LAND SURVEYOR
- P.S.M. - PROFESSIONAL SURVEYOR AND MAPPER
- R - RADIUS
- R/W - RIGHT-OF-WAY
- S.T. - SURVEY TIE
- U.E. - UTILITY EASEMENT
- W.M.A.E. - WATER MANAGEMENT ACCESS EASEMENT
- W.M.M.E. - WATER MANAGEMENT MAINTENANCE EASEMENT
- W.L.E. - LANDSCAPE EASEMENT
- - SET 5/8" IRON ROD AND CAP LB-6674
- O.E. - OVERHANG EASEMENT
- W.M.E. - WATER MANAGEMENT EASEMENT

DETAIL "B"

SCALE: 1" = 20'



THIS INSTRUMENT PREPARED BY
 WILBUR F. DIVINE, P.S.M. 4190, STATE OF FLORIDA
 LAWSON, NOBLE AND WEBB, INC.
 ENGINEERS PLANNERS SURVEYORS
 420 COLUMBIA DRIVE
 WEST PALM BEACH, FLORIDA
 CERTIFICATE OF AUTHORIZATION NUMBER LB6674

KEY MAP

N.T.S.

